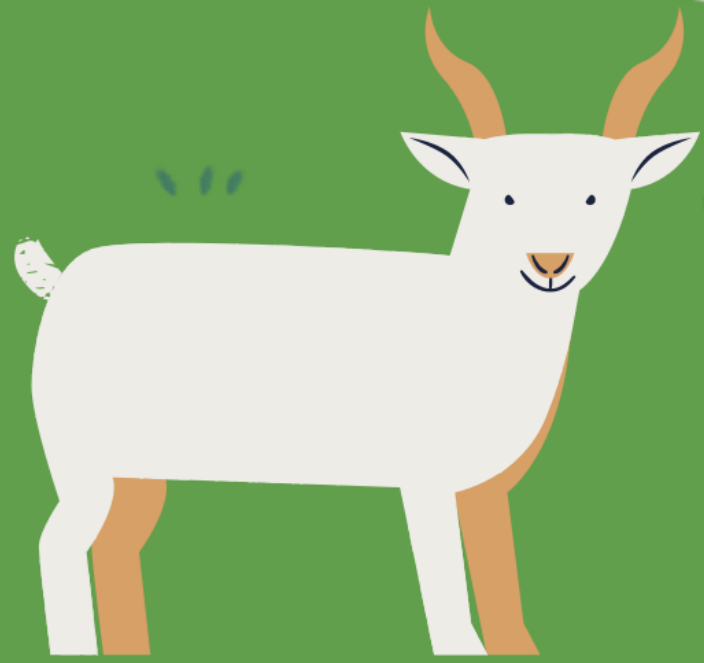




NATIONAL ACADEMY FOR LEARNING
An International school
Bengaluru



Montessori 3 - Calendar
November 2023 - 24

NAFL
Montessori 1 - July Calendar

NAFL

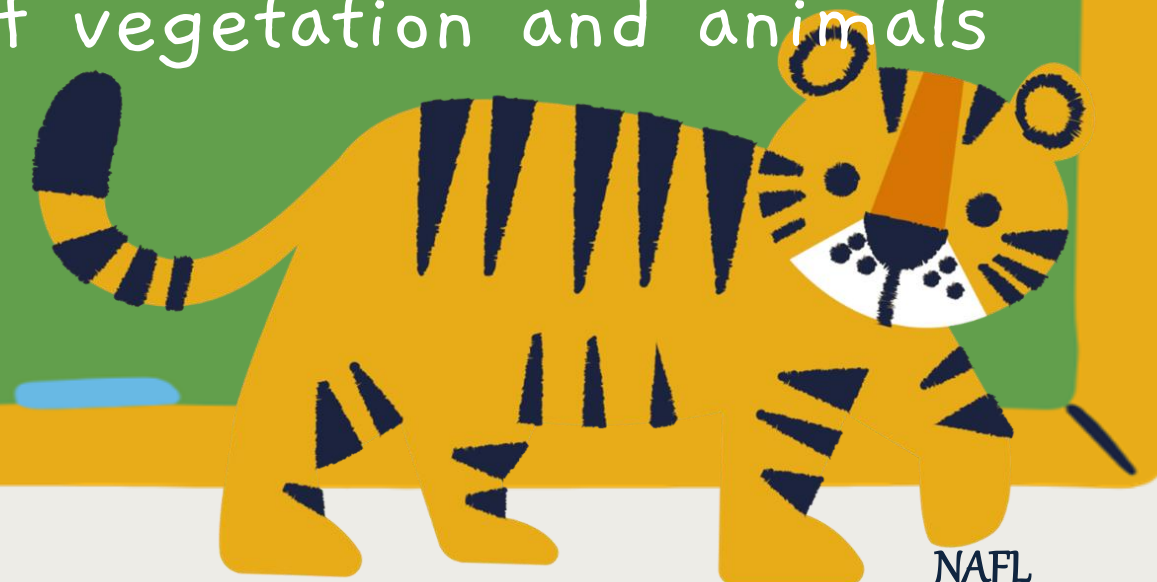
Montessori 3 - November Calendar

November – Animal Kingdom

Montessori -3

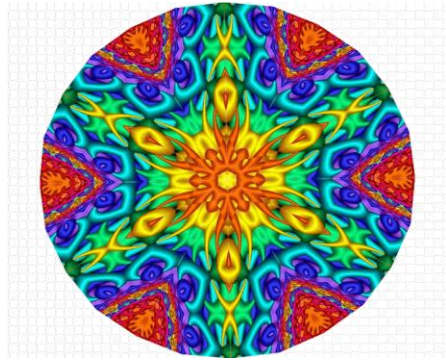
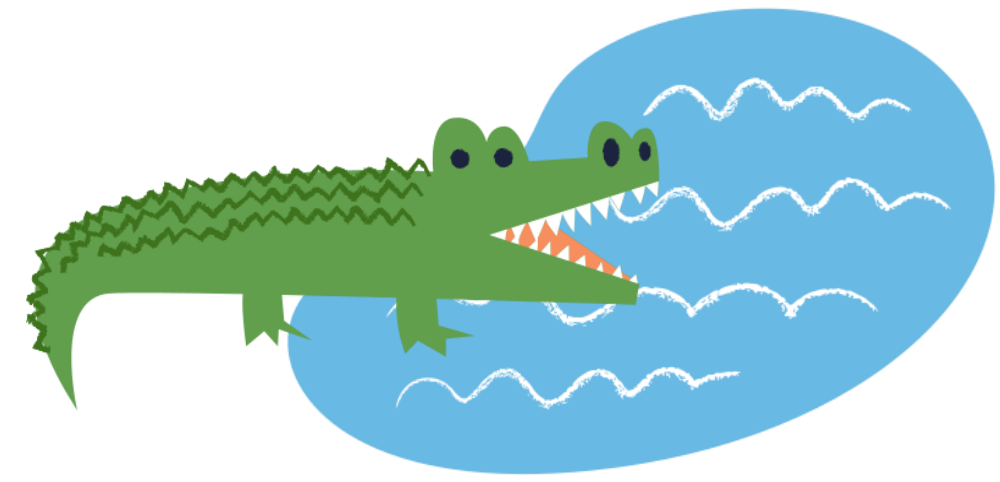
We discuss:

- Animal habitat: facts about the terrestrial, aquatic and aerial animals
- Arboreal animals
- The characteristics of herbivores, carnivores and omnivores (teeth, tongue etc.)
- Extinct animals, conservation of animals, sanctuaries
- Fossils
- Life cycle of a frog and hen
- Names of some animals in different continents
- Amazon Rain Forest – where it is found, what type of vegetation and animals
- Importance of animals in the world
- How to care for animals



NAFL

Mark Your Calendar



November 2nd - Kaleidoscope (fun with art)

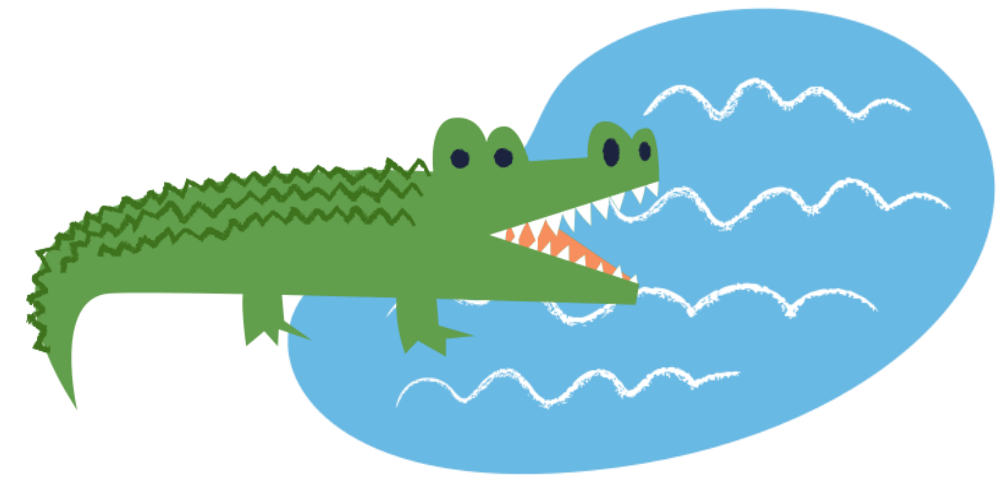


November 6th - Rajyotsava Assembly (students may come dressed in yellow and red attire)

November 3rd - Fun trip to Rangoli Gardens



Mark Your Calendar



November 10th - Diwali Assembly (students may come dressed for the occasion and carry their favourite Diwali snack)



November 15th - Children's Day (students may come dressed in their party wear and carry movie snacks)

Montessori - 3

Little children, from
the moment they are
weaned, are making
their way toward
independence.

M A R I A M O N T E S S O R I
T H E A B S O R B E N T M I N D

We are closed from November 10th to November 14th for Diwali

Principal: Ms. Indira Jayakrishnan

Coordinators: Ms. Pushpa, Ms. Divya

Grade Teachers: Ms. Neethu, Ms. Malini, Ms. Deepti,

Ms. Hamsashree, Ms. Srimathi, Ms. Ashwini, Ms. Deepthi, Ms. Shubha, Ms. Krithika

NAFL

Montessori 3 – November Calendar

